

Zero Tail Swing Mini Excavator

25IV Four

IHI
COMPACT EXCAVATOR SALES LLC
EST. 1994



Comfortable EVOLUTION

COMFORTABLE OPERATOR ROOM AND EASY MANIPULATION



• Easily visible monitor



- 1 Travel speed indicator
- 2 Glow indicator
- 3 Battery charge warning indicator
- 4 Engine oil pressure warning indicator
- 5 Water temperature warning indicator
- 6 Auto idle indicator
- 7 Control lock warning indicator
- 8 Water-separator warning indicator
- 9 ECO mode indicator
- 10 Water temperature gauge
- 11 Fuel gauge
- 12 Hour meter



• Legroom enlarged by 20%
• Cabin room enlarged by 25%
*In comparison with our former model



• Centralized switches (Right console box)

- A Engine starter switch
- B Throttle dial
- C Auto Idle selector switch
- D Light switch
- E Work mode selector switch



• Spare power port (12V 10A)

Safety EVOLUTION

WORLD-STANDARD SAFETY

- ROPS/TOPS Compliance Operator Cab and Canopy
- ROPS/TOPS Canopy (std.)
- ROPS/ TOPS Cab (opt.)
- FOPS Cab (opt.)



ROPS/TOPS Cab (opt.)

ERROR-PREVENTION

- All-lever lock
- Neutral engine-start
- Auto-parking brake in swing & traction motors



All operations are blocked when the lever is raised.

High Performance EVOLUTION

HIGH POWER DIGGING AND QUICK RESPONSE

- Digging force increased by 10%
*In comparison with our former model
- Quickly responsive 4-pump system

EASY MAINTENANCE

- Large covers for easier access



• Right hand cover



• Engine

Hydraulic tank with air breather



Large fuel filter

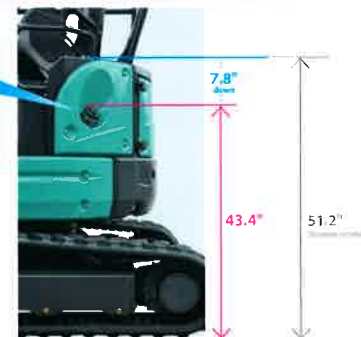


Water-separator



*The warning indicator turns on if water is collected up to the specified level.

EASY FUEL REFILLING



Refilling position (unit : inches)

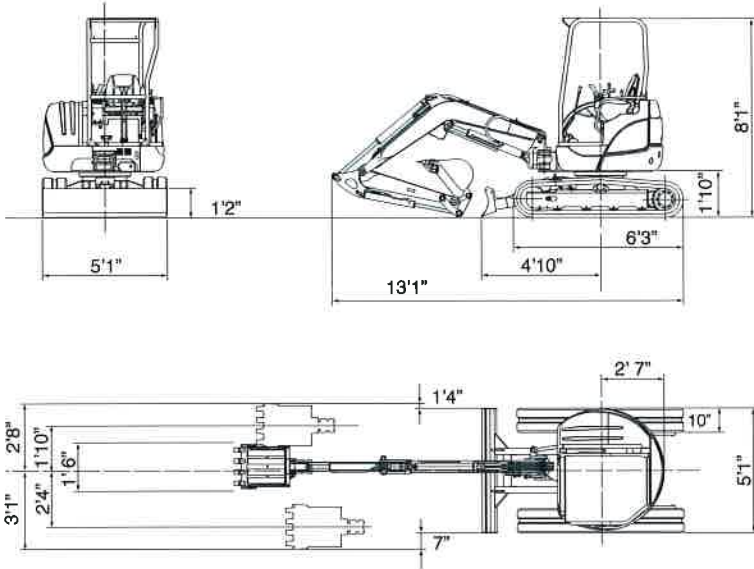
LOW FUEL CONSUMPTION

24% FUEL SAVINGS

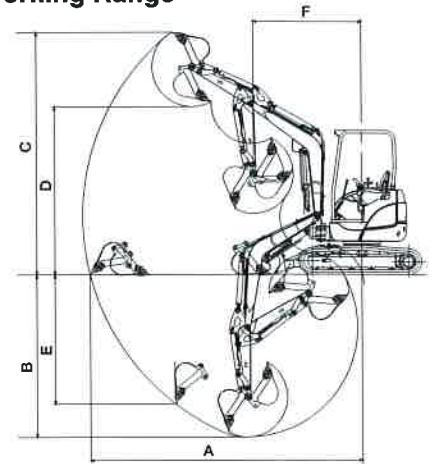
From the New Auto Idle and Eco Mode Features.
*In comparison with our former model

25V Four

■ Dimensions



■ Working Range



	4-Post/Cabin
A Max. digging radius	15'
B Max. digging depth	8'
C Max. digging height	13'8"
D Max. dumping height	9'5"
E Max. vertical digging depth	6'1"
F Min. front turning radius	6'6"
At right boom swing	5'7"

■ 25V4 Specifications

Performance		Boom swing system	
Bucket capacity	2.8 cu. ft.	Type	Boom offset with hydraulic cylinder
Bucket width	18"	Swing angle (L/R)	50°/80°
Operating weight: 4-Post(Cabin)	5,955 lbs. (6085 lbs.)	Hydraulic system	
Transportation weight: 4-Post(Cabin)	5,750 lbs. (5,880 lbs.)	Pressure	3,000 psi
Swing speed	9 min ⁻¹	Pump • type/hydraulic flow	2 Piston/2 Gear • 7.9 gpm/min x 2 + 5.2 gpm
Travel speed (low/high)	1.5/2.8 mph	Dozer blade	
Gradeability	30"	Size	61"x14.4"
Ground pressure	3.9 psi	Lift above ground / Drop below ground	14.6"/15.4"
Max bucket digging force	5,698 lbs.	Max auxiliary flow	
Engine		1st line	12.7 gpm
Model	Kubota D1305-E4B		
Rated output	23.6 hp/2400 rpm		
Fuel tank capacity	11.08 gallons		

Optional Attachments:

Hydraulic Hammer



Safe Lock



Hydraulic Thumb



Features:

1 Flow hold switch 2 Flow mode selector switch



Pilot Joystick with proportional switch



Pattern change selector



Additional counterweight (std.)



Steel Track (opt.)



● Photographs may differ in some cases from actual objects. Specifications are subject to change without notice due to technical improvements or modifications.



400 Production Court
 Elizabethtown, KY 42701
 Phone: 800.538.1447
 Fax: 270.737.0419
 www.ihices.com